

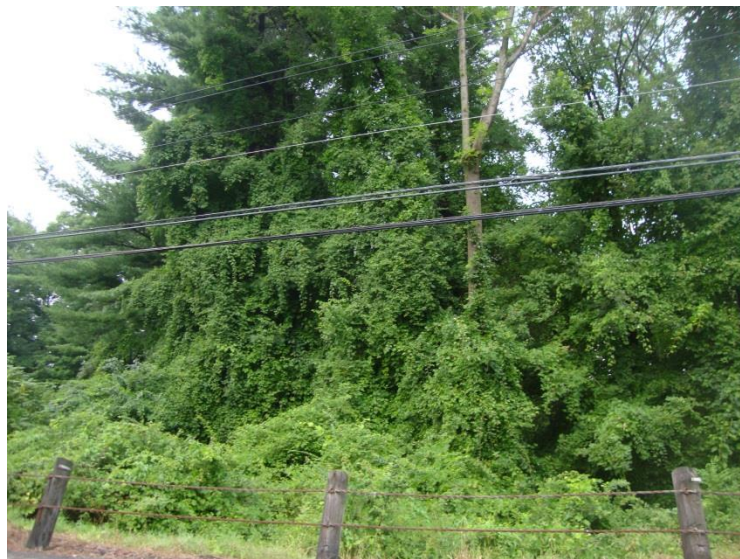
PEST ALERT !

Have you seen this plant?

Porcelainberry
(*Ampelopsis brevipedunculata*)



Close-up of fruit and leaves.



Example of an infestation, Route. 4, Sharon, CT

How to Identify Porcelainberry

- ◆ Woody vine.
- ◆ Leaves resemble those of our native grape species; fruit range in color from light green or yellow to bright blue and are 0.25-0.30 in. in diameter.
- ◆ Can be found along edges of woods, meadows and roadsides; also in gardens where it is planted as an ornamental, and on stone walls.
- ◆ Prefers moist soil and partial shade.

Note: an easy way to differentiate Porcelainberry from our native grapes is to cut a woody section of vine and observed its pith (tissue in center of stem). Porcelainberry has white pith while that of our native grape species is brown.

The Farmington River Coordinating Committee (FRCC) is looking for occurrences of Porcelainberry. The distribution of this highly invasive woody vine is unknown in the Upper Farmington riparian corridor. It has not yet been observed in natural areas but it may be present in landscape plantings. This is another non-native pest species we need you to be on the lookout for so that we can prevent it from escaping into natural areas where it will damage trees and shade out native plants.

Please report observations to FRCC (www.farmingtonriver.org) so we can determine its distribution and stop its spread before it is too late.

If you have Porcelainberry growing on your property, we will advise you about control options and recommend alternative replacement plants to grow.